



# KEEPING TRACK OF CONSERVATION

Jessica Owley

SUNY Buffalo Law School

May 8, 2015



A stylized, dark brown illustration of a plant with several large, elongated leaves and a cluster of small, round berries or buds on thin stems, positioned on the left side of the slide.

Case Study #1

# SAN BRUNO MOUNTAIN





Colma Brisbane





# South San Francisco & San Bruno Mountain



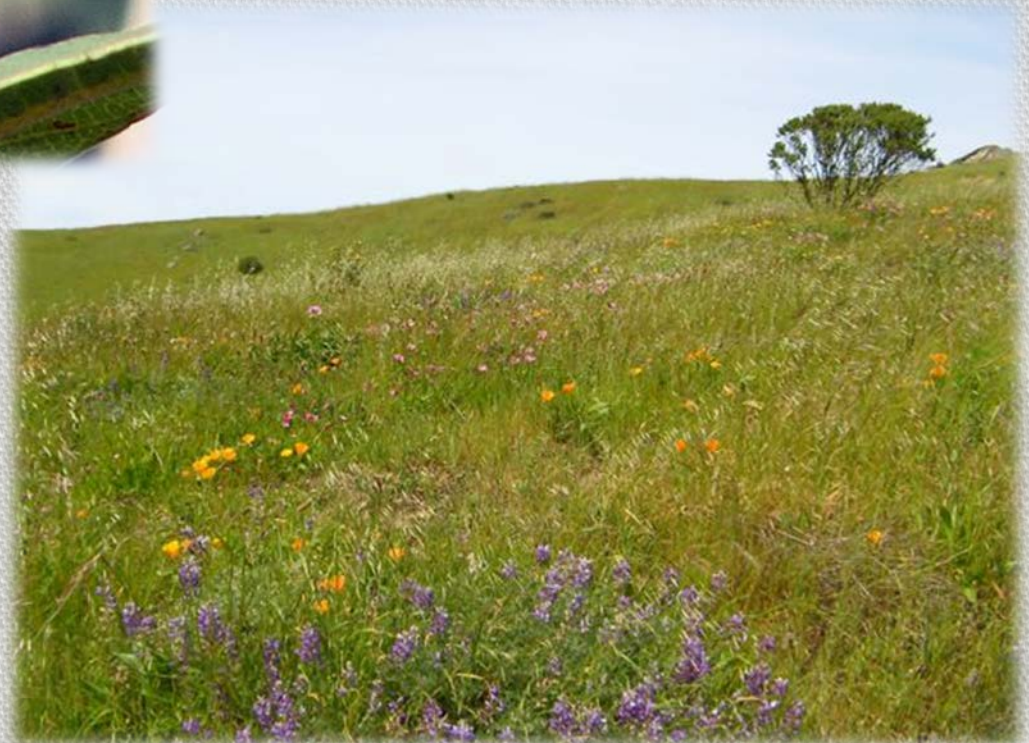


# San Bruno Mountain



San Bruno Elfin butterfly  
(*Callophrys mossii bayensis*)

Grasses & Wildflowers of  
San Bruno Mountain

















A stylized, dark brown illustration of a plant with several large, oval leaves and a cluster of small, round berries or buds on thin stems, positioned on the left side of the slide.

Case Study #2

# LYTLE CREEK TURNOUT



# **The New Kid on the Block: The Cajon Creek Conservation Easement**

- **Lytle Creek Turnout Low Effect Habitat Conservation Plan**

- The HCP covered a 2.16 acre area inhabited by a the endangered San Bernardino Merriam's Kangaroo rat.
- The notice of the proposed HCP indicated that conservation easements protecting endangered species habitat were likely involved in the issuance of this permit.



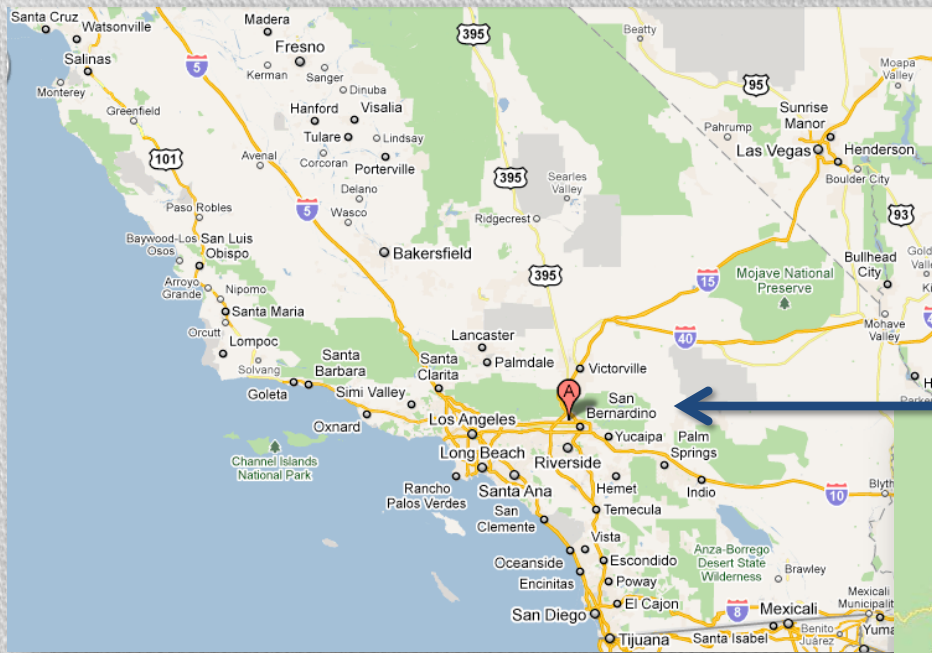
# San Bernardino Merriam's Kangaroo Rat (*Dipodomys merriami parvus*)



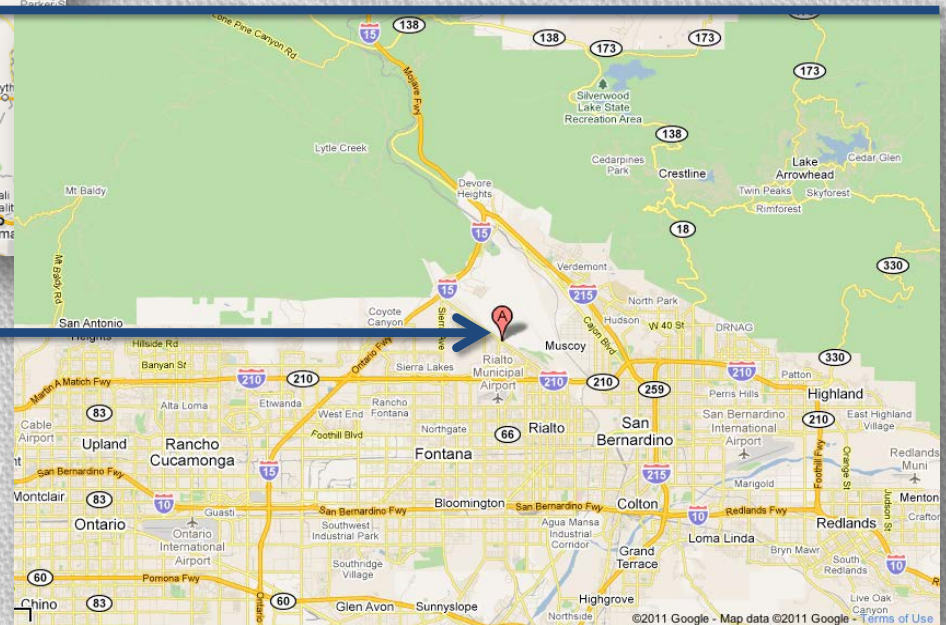
Photo Courtesy of: <http://ecos.fws.gov/speciesProfile/profile/speciesProfile.action?spcode=A0G8>



# Southern California



## City of Rialto, San Bernardino County, California



Lytle Creek Turnout Low-Effect Habitat Conservation Plan is approximately located at the intersection of Linden and Riverside avenues.







A stylized, dark brown illustration of a plant with several large, pointed leaves and a cluster of small, round berries or buds on thin stems, positioned on the left side of the slide.

Case Study #3

# CUSHENBURY SAND AND GRAVEL









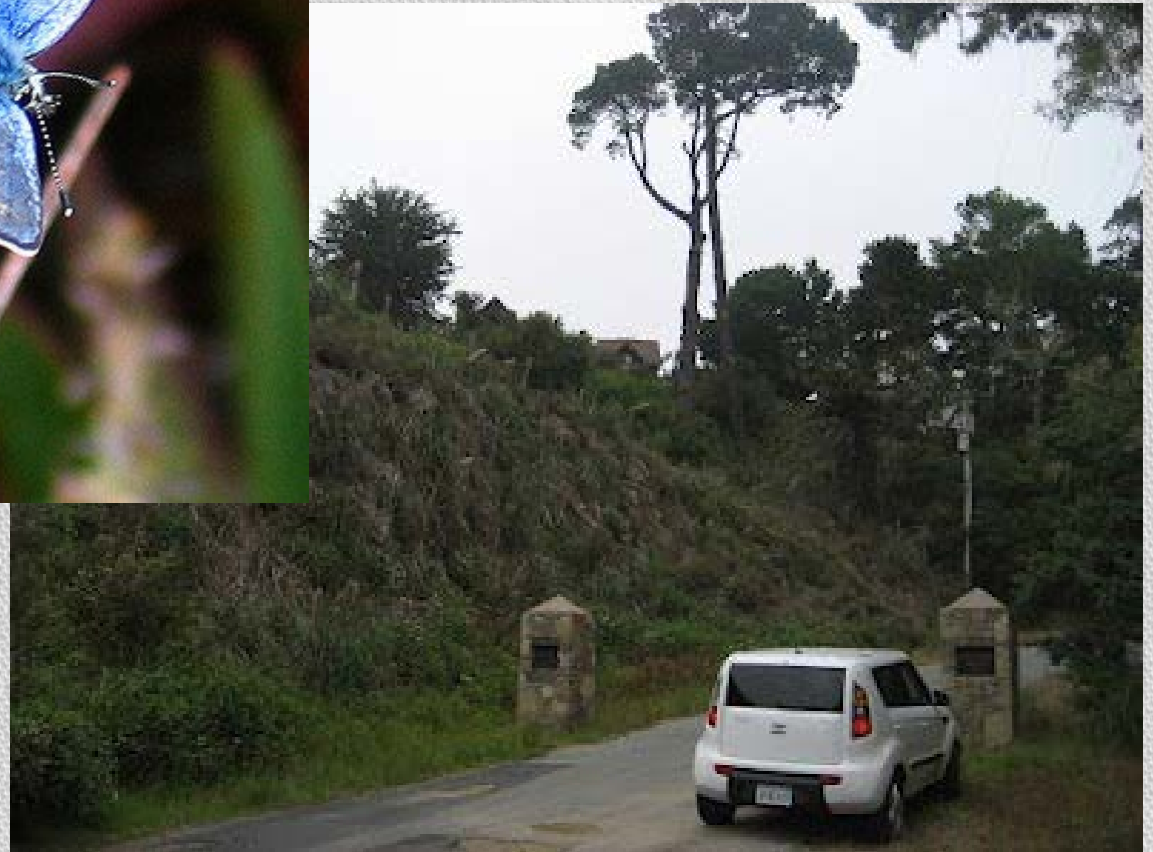




Case Study #4

# WILDCAT LINE











# Conclusions and Concerns

- Mitigation measures were not just hard to track, they were hard to determine.
- Challenging for the public to learn about mitigation measures both during the section 10 process and afterwards
- Need better access to information both at the federal level for HCPs and at the county level for CEs
- Uncertainty regarding whether agencies tasked with overseeing mitigation actually do so.



# ACKNOWLEDGMENTS

- The Baldy Center for Law & Social Policy generously funded my field work.
- Many thanks to the public employees at the federal, state, and local level including the staff at various county recorders offices.
- This project benefited from feedback and suggestions received at junior scholar workshops at the University of Washington and at Lewis & Clark.